

vtech[®]

Instruction Manual

Animal Friends Boat



VTech understands that a child's needs and abilities change as they grow and with that in mind we develop our toys to teach and entertain at just the right level...

vtech Baby

Toys that will stimulate their interest in different textures, sounds and colours

I am...

...responding to colours, sounds and textures

...understanding cause and effect

...learning to touch, reach, grasp, sit-up, crawl and toddle

Birth-36 months



Pre-School

Interactive toys to develop their imagination and encourage language development

I want...

...to get ready for school by starting to learn the alphabet and counting

...my learning to be as fun, easy and exciting as can be

...to show my creativity with drawing and music so my whole brain develops

3-6 years



Electronic Learning Computers

Cool, aspirational and inspiring computers for curriculum related learning

I need...

...challenging activities that can keep pace with my growing mind

...intelligent technology that adapts to my level of learning

...National Curriculum based content to support what I'm learning at school

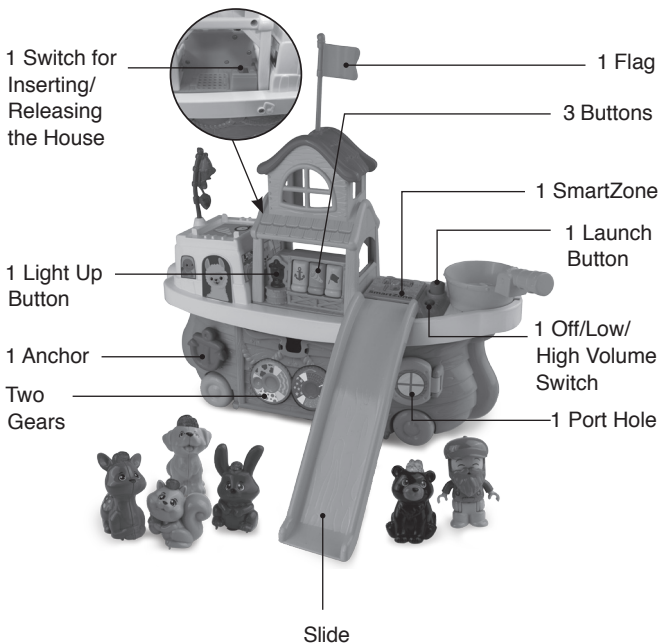
4-10 years



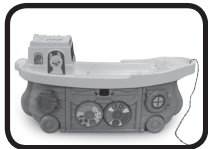
To learn more about this and other VTech® products, visit www.vtech.co.uk

INTRODUCTION

Thank you for purchasing the **Animal Friends Boat!**
Make some friends and enjoy the 2 ways to play with the **Animal Friends Boat** by VTech®. The animals will invite you to play along on the boat or in the house. Slide all the characters down the slide for more fun!



INCLUDED IN THE PACKAGE



Animal Friends Boat



1 House



6 Interactive Friends



1 Slide



1 Watchtower



1 Fishing Rod
and 1 Flag

- 1 Quick Start Guide

WARNING:

All packing materials such as tape, plastic sheets, packaging locks, removable tags, cable ties, cords and packaging screws are not part of this toy and should be discarded for your child's safety.

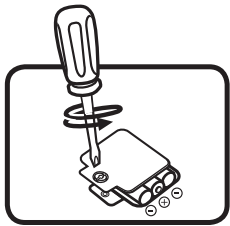
NOTE:

Please save this Instruction Manual as it contains important information.

INSTRUCTIONS

BATTERY REMOVAL AND INSTALLATION

1. Make sure the unit is turned **OFF**.
2. Locate the battery cover on the bottom of the unit. Use a coin or a screwdriver to loosen the screw and then open the battery cover.
3. If used batteries are present, remove these batteries from the unit by pulling up on one end of each battery.
4. Install 3 new AAA (AM-4/LR03) batteries following the diagram inside the battery box. (For best performance, alkaline batteries or fully charged Ni-MH rechargeable batteries are recommended).
5. Replace the battery cover and tighten the screw to secure.



WARNING:

Adult assembly required for battery installation.
Keep batteries out of reach of children.

IMPORTANT: BATTERY INFORMATION

- Insert batteries with the correct polarity (+ and -).
- Do not mix old and new batteries.
- Do not mix alkaline, standard (carbon-zinc) or rechargeable batteries.
- Only batteries of the same or equivalent type as recommended are to be used.
- Do not short-circuit the supply terminals.
- Remove batteries during long periods of non-use.
- Remove exhausted batteries from the toy.
- Dispose of batteries safely. Do not dispose of batteries in fire.

RECHARGEABLE BATTERIES:

- Remove rechargeable batteries (if removable) from toy before charging.
- Rechargeable batteries are only to be charged under adult supervision.
- Do not charge non-rechargeable batteries.

Disposal of batteries and product



The crossed-out wheellie bin symbols on products and batteries, or on their respective packaging, indicates they must not be disposed of in domestic waste as they contain substances that can be damaging to the environment and human health.



The chemical symbols Hg, Cd or Pb, where marked, indicate that the battery contains more than the specified value of mercury (Hg), cadmium (Cd) or lead (Pb) set out in the Batteries and Accumulators Regulation.

The solid bar indicates that the product was placed on the market after 13th August, 2005.

Please dispose of your product and batteries responsibly.

In the UK, give this toy a second life by disposing of it at a small electricals collection point* so all of its materials can be recycled.

Learn more at:

www.vtech.co.uk/recycle

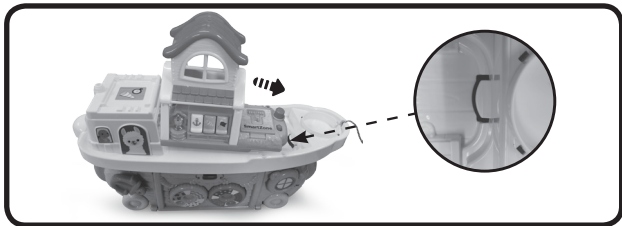
www.vtech.com.au/sustainability

* Visit www.recyclenow.com to see a list of collection points near you.

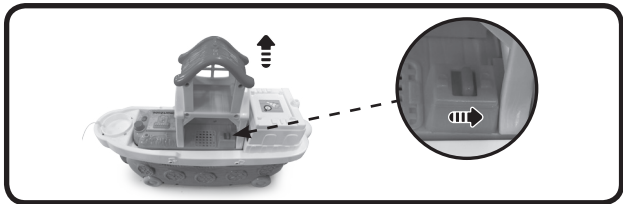
ASSEMBLY INSTRUCTIONS

With the **Animal Friends Boat**, safety comes first. To ensure your child's safety, adult assembly is required.

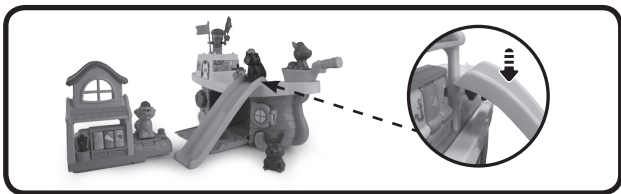
1. When you want to put the house on the boat, please insert the house into the right hole of the house first, as below, then push the house down, you will hear a "click" .



2. If you want to remove the house from the boat, push the switch at the back of the house first, then remove the house.



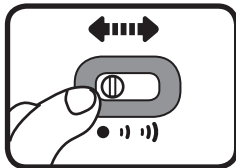
3. The slide can also be inserted into the hole at the front of the boat to have even more fun.



PRODUCT FEATURES

1. Off/Low/High Volume Switch

To turn the unit **On**, slide the **Off/Low/High Volume Switch** to the Low or High position. You will hear a playful song, a phrase and sounds. To turn the unit **Off**, slide the **Off/Low/High Volume Switch** to the **Off** position.



2. Automatic Shut Off

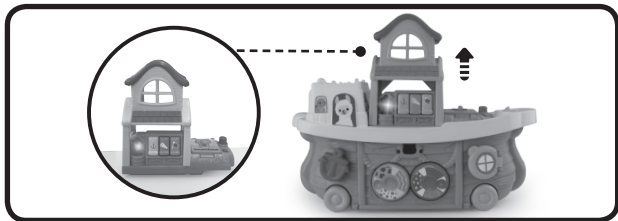
To preserve battery life, the **Animal Friends Boat** will automatically power down after approximately 30 seconds without input. The unit can be turned on again by pressing the buttons or putting an animal on the SmartZone.

NOTE:

If the unit powers down while playing, we suggest changing the batteries.

ACTIVITIES

1. Press the **Light Up Button** to hear songs, phrases, sounds and melodies. The light will flash with the sounds.
2. Press the **Buttons** to hear phrases and sounds. The light will flash with the sounds.
3. Put an animal on the **SmartZone**, to hear phrases and fun sounds. The light will flash with the sounds.
4. When the house is on the boat or removed and placed on a surface different sounds will be triggered.



5. Press the launch button to release an animal from the **SmartZone** and down the slide.



MELODY LIST

1. Sailing Sailing
2. Row, Row, Row Your Boat
3. Sailor's Hornpipe
4. Aiken Drum
5. Good Morning Merry Sunshine
6. Green Grass Grew All Around
7. Incy Wincy Spider
8. Mulberry Bush
9. Pat-A-Cake
10. Ride A Cock Horse to Banbury Cross
11. Roses Are Red
12. Skip to My Lou
13. Three Little Kittens
14. A-Tisket A-Tasket
15. Au Clair de la Lune

SONG LYRICS

Song 1

Little One, little one, get on board,
Let's sail away and discover the world.
With all our friends, we'll have lots of fun,
Together we'll explore all day long!

Song 2

Home, home, our sweet home.
Welcome, welcome, come on in.
Hello, my little friend,
We'll have fun today.

Song 3

The sun is shining, the wind is blowing.
Let's raise the anchor to sail far away!

CARE & MAINTENANCE

1. Keep the unit clean by wiping it with a slightly damp cloth.
2. Keep the unit out of direct sunlight and away from any direct heat source.
3. Remove the batteries when the unit will not be in use for an extended period of time.
4. Do not drop the unit on hard surfaces and do not expose the unit to moisture or water.

TROUBLESHOOTING

If for some reason the unit stops working, please follow these steps:

1. Please turn the unit **Off**.
2. Interrupt the power supply by removing the batteries.
3. Let the unit stand for a few minutes, then replace the batteries.
4. Turn the unit **On**. The unit should now be ready to play with again.
5. If the product still does not work, install a brand new set of batteries.

If the problem persists, please contact our Consumer Services Department and a service representative will be happy to help you.

CONSUMER SERVICES

Creating and developing **VTech®** products is accompanied by a responsibility that we at **VTech®** take very seriously. We make every effort to ensure the accuracy of the information, which forms the value of our products. However, errors sometimes can occur. It is important for you to know that we stand behind our products and encourage you to call our Consumer Services Department with any problems and/or suggestions that you might have. A service representative will be happy to help you.

UK Customers:

Phone: 0330 678 0149 (from UK) or +44 330 678 0149 (outside UK)

Website: www.vtech.co.uk/support

Australian Customers:

Phone: 1800 862 155

Website: support.vtech.com.au

NZ Customers:

Phone: 0800 400 785

Website: support.vtech.com.au

PRODUCT WARRANTY/ CONSUMER GUARANTEES

UK Customers:

Read our complete warranty policy online at vtech.co.uk/warranty.

Australian Customers:

VTECH ELECTRONICS (AUSTRALIA) PTY LIMITED –
CONSUMER GUARANTEES

Under the Australian Consumer Law, a number of consumer guarantees apply to goods and services supplied by VTech Electronics (Australia) Pty Limited. Please refer to vtech.com.au/consumerguarantees for further information.

**Visit our website for more
information about our products,
downloads, resources and more.**

www.vtech.co.uk
www.vtech.com.au

